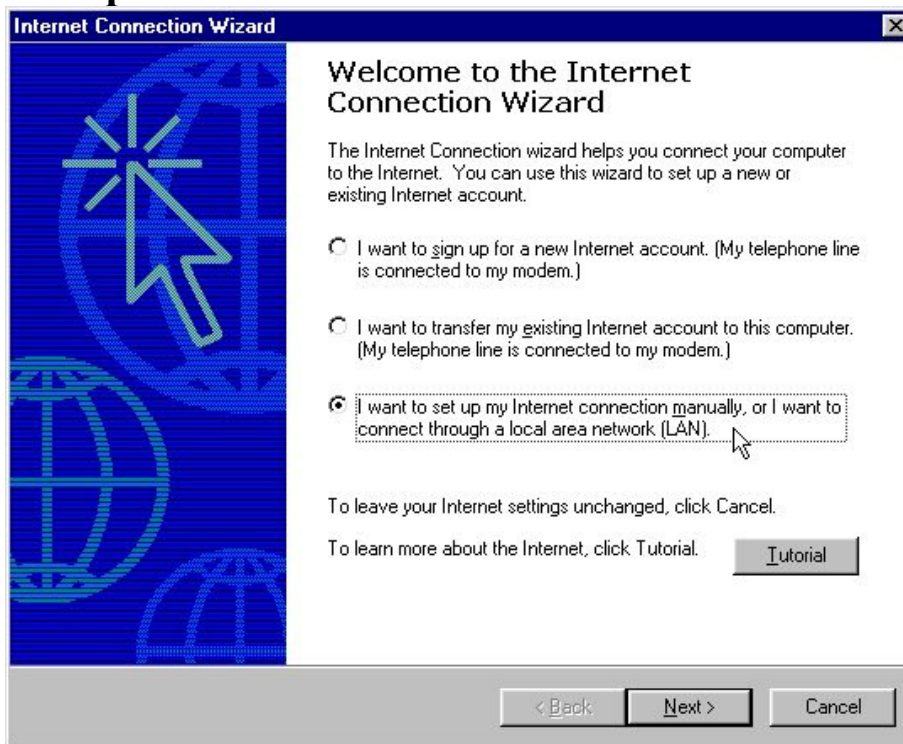
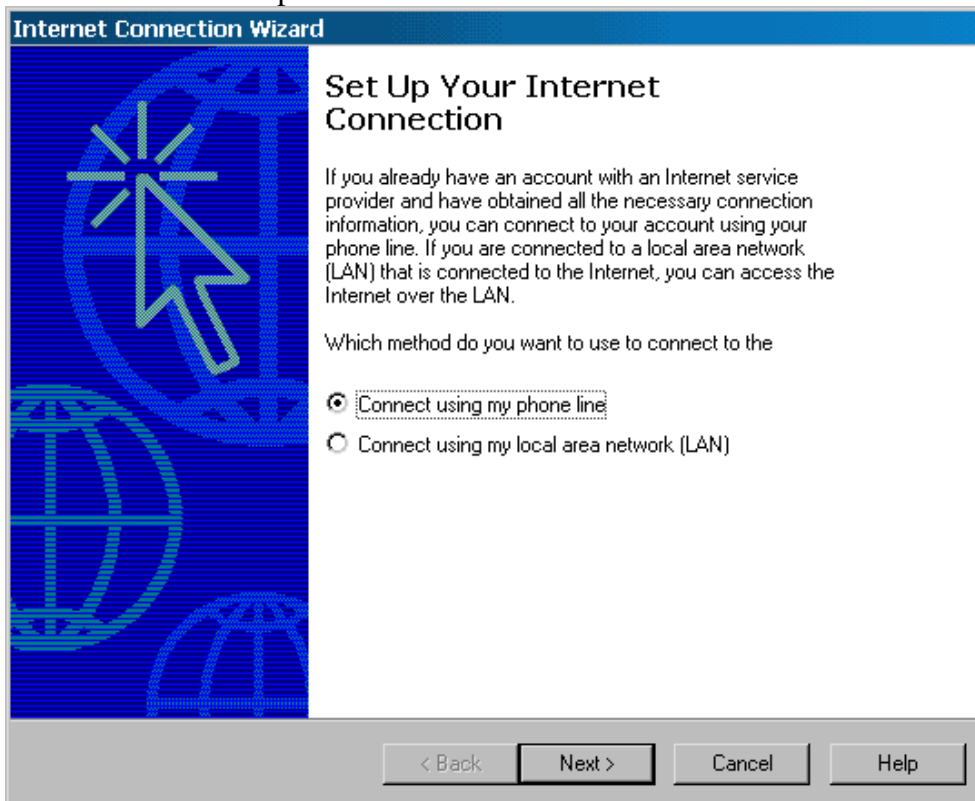


Dialup - Windows 2000/ME



1. Click the bottom option and hit *Next*



2. Click the top option and hit *Next*

Internet Connection Wizard

Step 1 of 3: Internet account connection information

Type the phone number you dial to connect to your ISP.

Area code: Telephone number:

Country/region name and code:

Dial using the area code and country code

To configure connection properties, click Advanced.
(Most ISPs do not require advanced settings.)

3. Type in the area code and phone number and hit *Next*.

Internet Connection Wizard

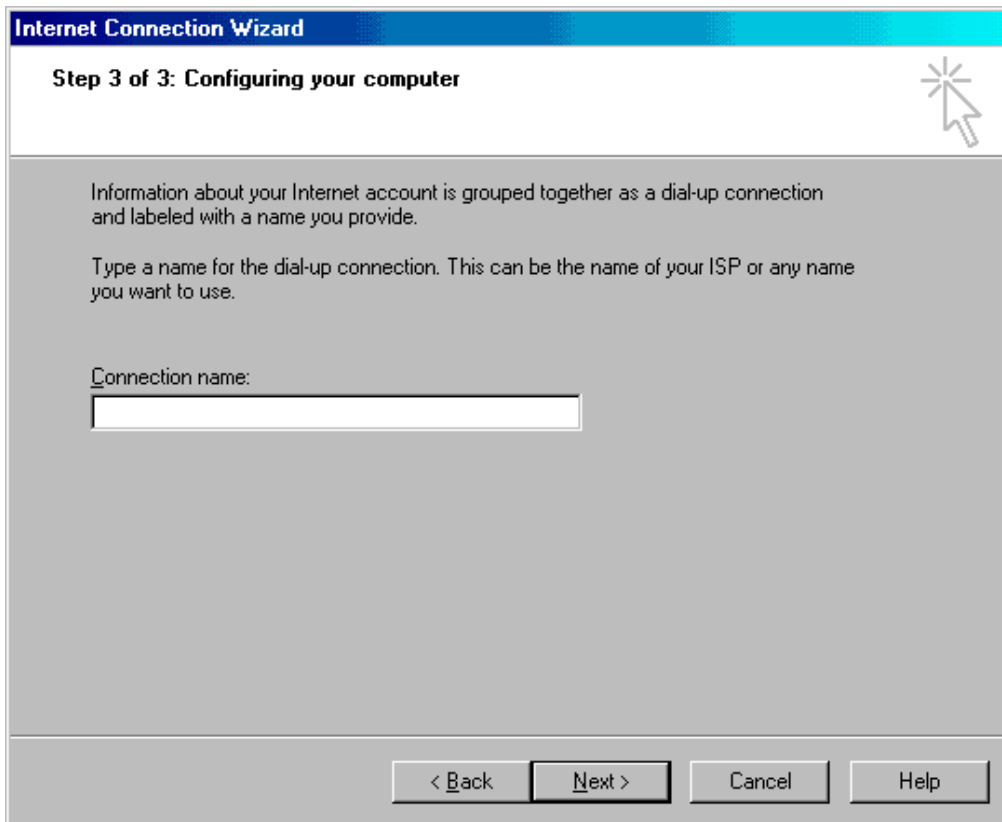
Step 2 of 3: Internet account logon information

Type the user name and password you use to log on to your ISP. Your user name may also be referred to as your Member ID or User ID. If you do not know this information, contact your ISP.

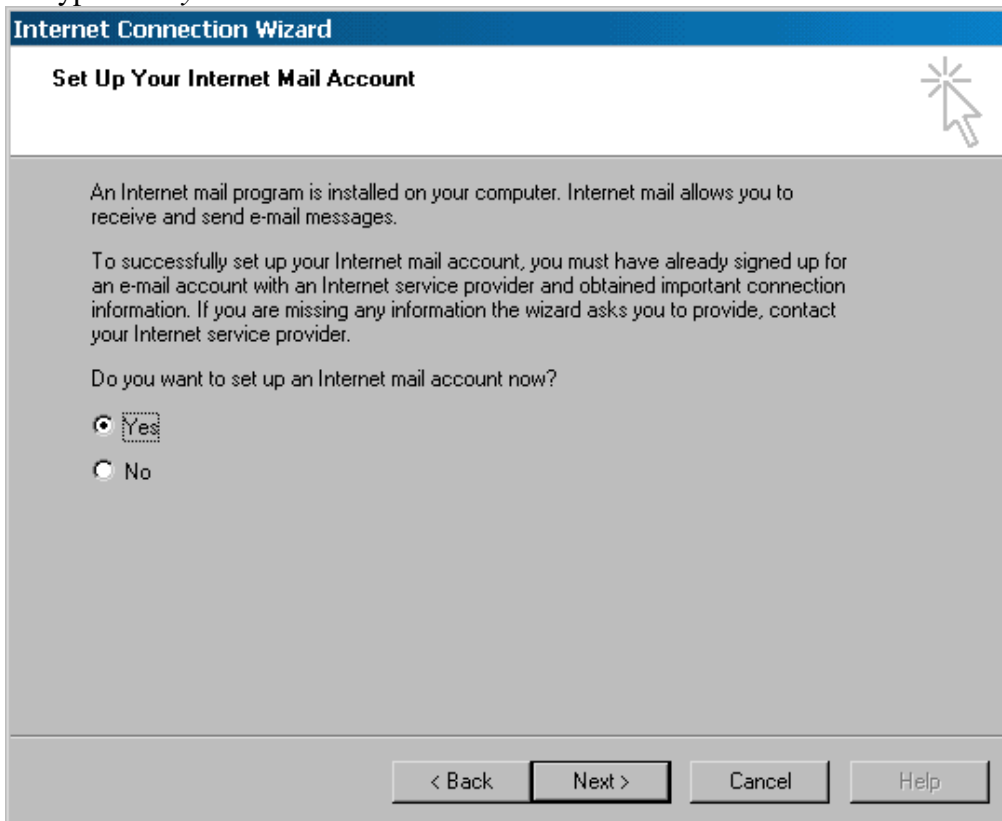
User name:

Password:

4. Type in your Username and Password



5. Type in *Caylix* and hit *Next*



6. Click *Yes* and hit *Next*

Internet Connection Wizard

Your Name

When you send e-mail, your name will appear in the From field of the outgoing message. Type your name as you would like it to appear.

Display name:

For example: John Smith

< Back **Next >** Cancel Help

7. Type in your name and hit *Next*

Internet Connection Wizard

Internet E-mail Address

Your e-mail address is the address other people use to send e-mail messages to you.

E-mail address:

For example: someone@microsoft.com

< Back **Next >** Cancel Help

8. Type in your Caylix email address and hit *Next*

Internet Connection Wizard

E-mail Server Names

My incoming mail server is a **POP3** server.

Incoming mail (POP3, IMAP or HTTP) server:

An SMTP server is the server that is used for your outgoing e-mail.

Outgoing mail (SMTP) server:

< Back **Next >** Cancel Help

9. Make sure the top box says *POP3* and fill in as follows:
Incoming mail server: *pop.caylix.com*
Outgoing mail server: *smtp.caylix.com*

Internet Connection Wizard

Internet Mail Logon

Type the account name and password your Internet service provider has given you.

Account name:

Password:

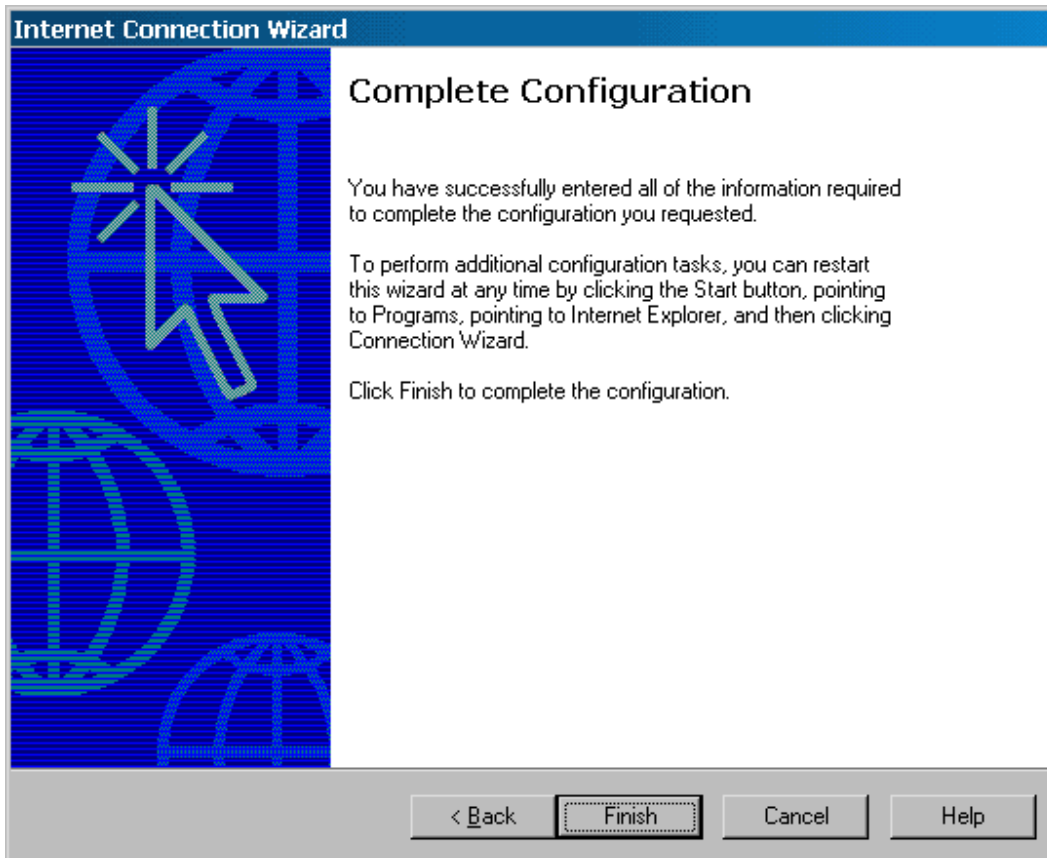
Remember password

If your Internet service provider requires you to use Secure Password Authentication (SPA) to access your mail account, select the 'Log On Using Secure Password Authentication (SPA)' check box.

Log on using Secure Password Authentication (SPA)

< Back **Next >** Cancel Help

10. Type in your Username and Password and hit *Next*



11. Click *Finish*