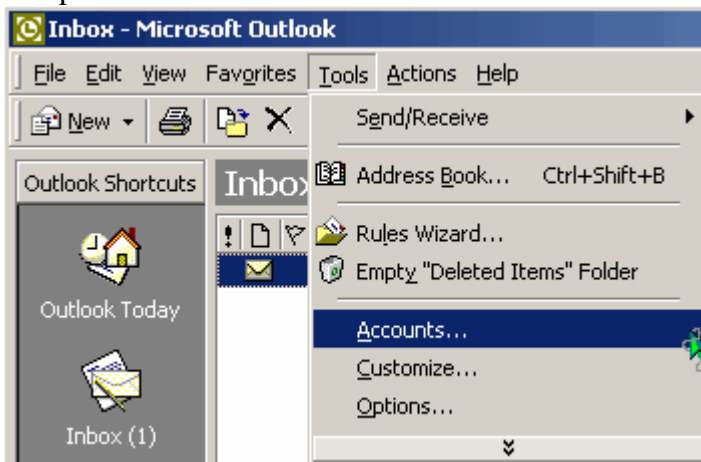
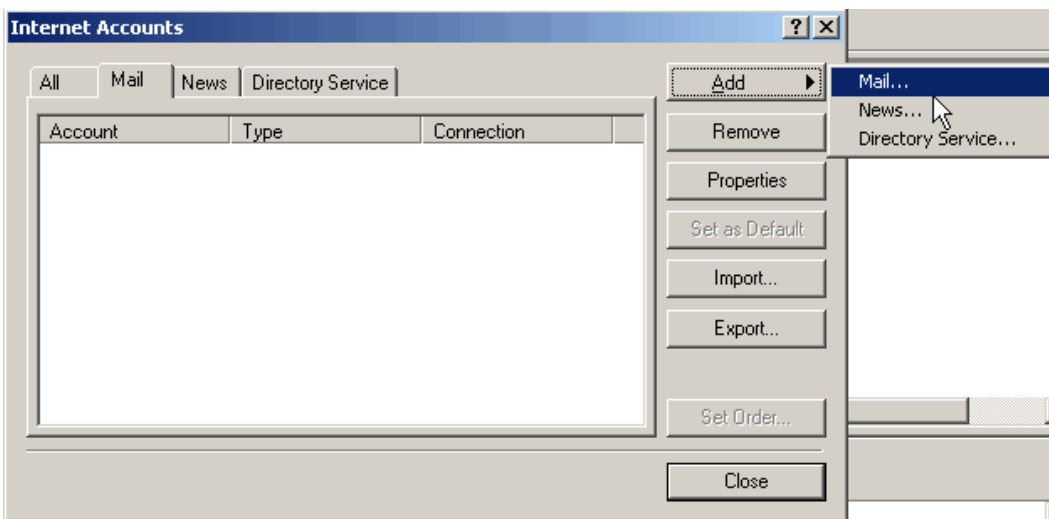


Outlook 2000 Setup

1. Open Outlook.



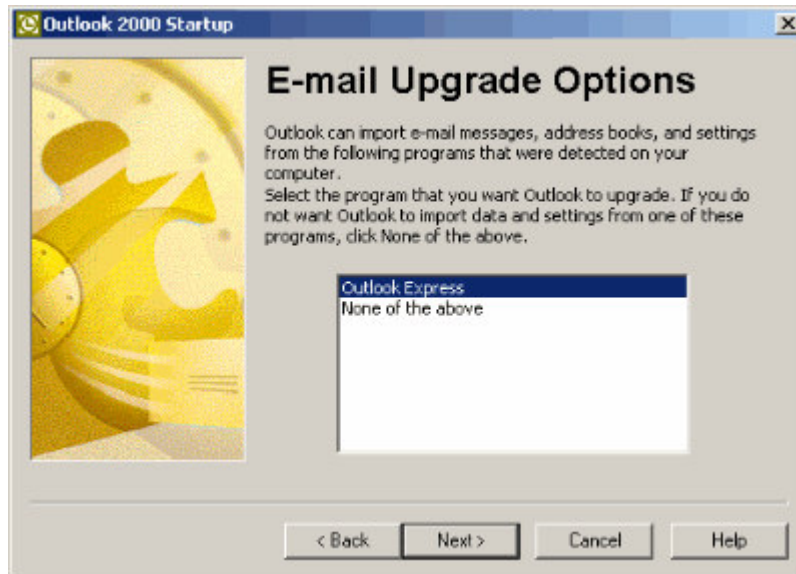
2. Click the *Tools* menu at the top of the window. Select *Accounts*



3. Click the *Add* button and select *Mail*



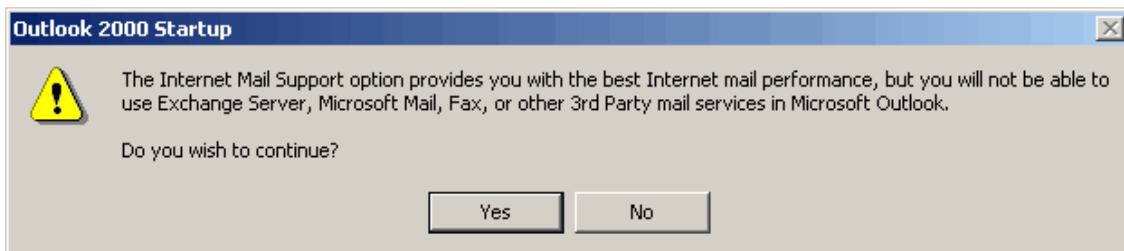
4. Click *Next*



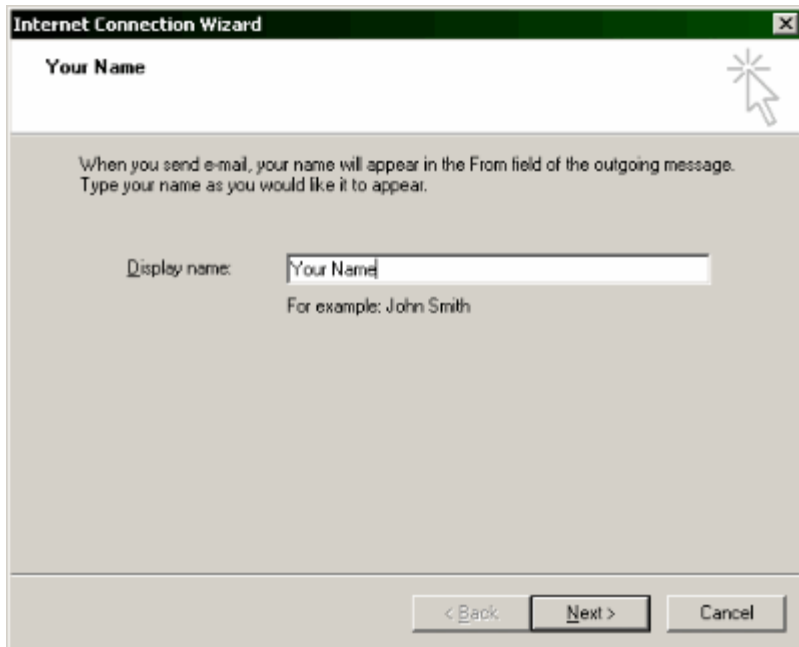
5. If you would like to import email and your address book from Outlook Express, select ***Outlook Express***. Otherwise, select ***None of the above***. Click ***Next***



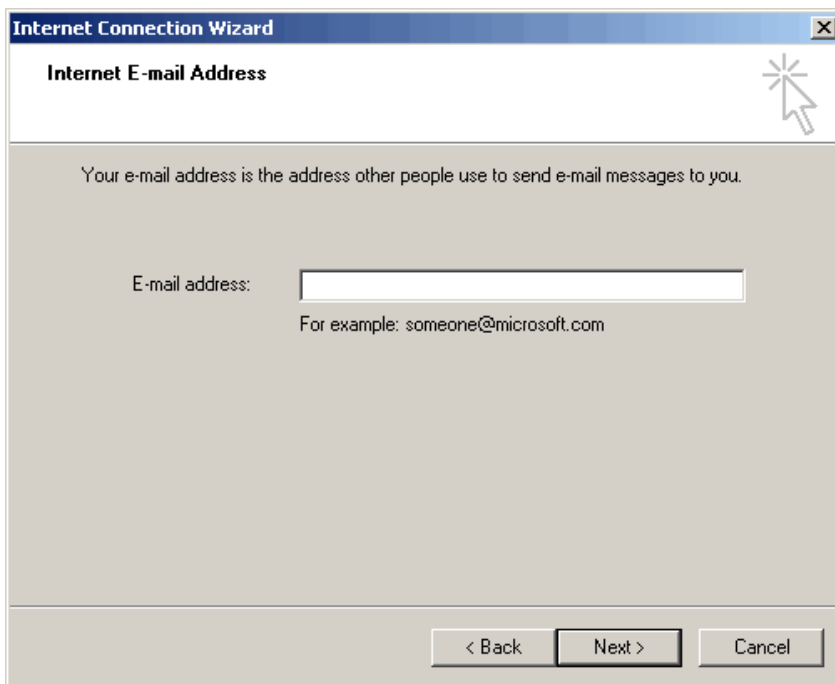
6. Select ***Internet Only***. Click ***Next***



7. Click ***Yes*** to continue.



8. Enter your name in the **Display Name** box. Click *Next*.



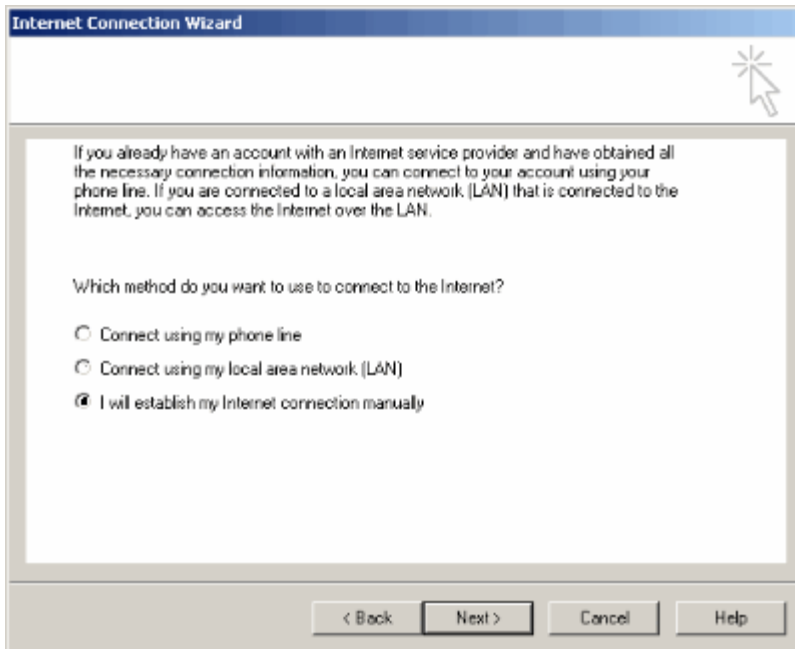
9. Enter your *Caylix email address* in the *E-mail address* box. Click *Next*.

The screenshot shows the 'Internet Connection Wizard' window with the title 'E-mail Server Names'. It features a dropdown menu set to 'POP3' with the text 'My incoming mail server is a POP3 server.' Below this are two empty text input fields: 'Incoming mail (POP3, IMAP or HTTP) server:' and 'Outgoing mail (SMTP) server:'. At the bottom are three buttons: '< Back', 'Next >', and 'Cancel'.

10. In the **Incoming Mail** box, type: *pop.caylix.com*
In the **Outgoing Mail** box, type: *smtp.caylix.com*. Click **Next**

The screenshot shows the 'Internet Connection Wizard' window with the title 'Internet Mail Logon'. It contains a text prompt: 'Type the account name and password your Internet service provider has given you.' Below are two text input fields: 'Account name:' and 'Password:'. A checked checkbox labeled 'Remember password' is positioned below the password field. At the bottom, there is explanatory text about Secure Password Authentication (SPA) and an unchecked checkbox labeled 'Log on using Secure Password Authentication (SPA)'. Three buttons are at the bottom: '< Back', 'Next >', and 'Cancel'.

11. In the **Account Name** box, enter your **Caylix Username**
In the **Password** box, enter your **Caylix password**.
DO NOT check the box next to "log on using Secure Password Authentication". Click **Next**



12. Select ***I will establish my Internet Connection Manually***. Click ***Next***. Click ***Finish***.

Repeat these steps for any additional Caylix email addresses you may have.