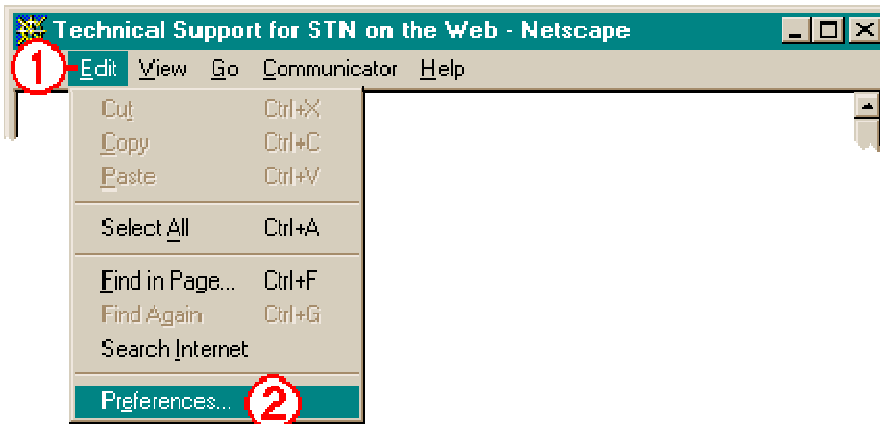
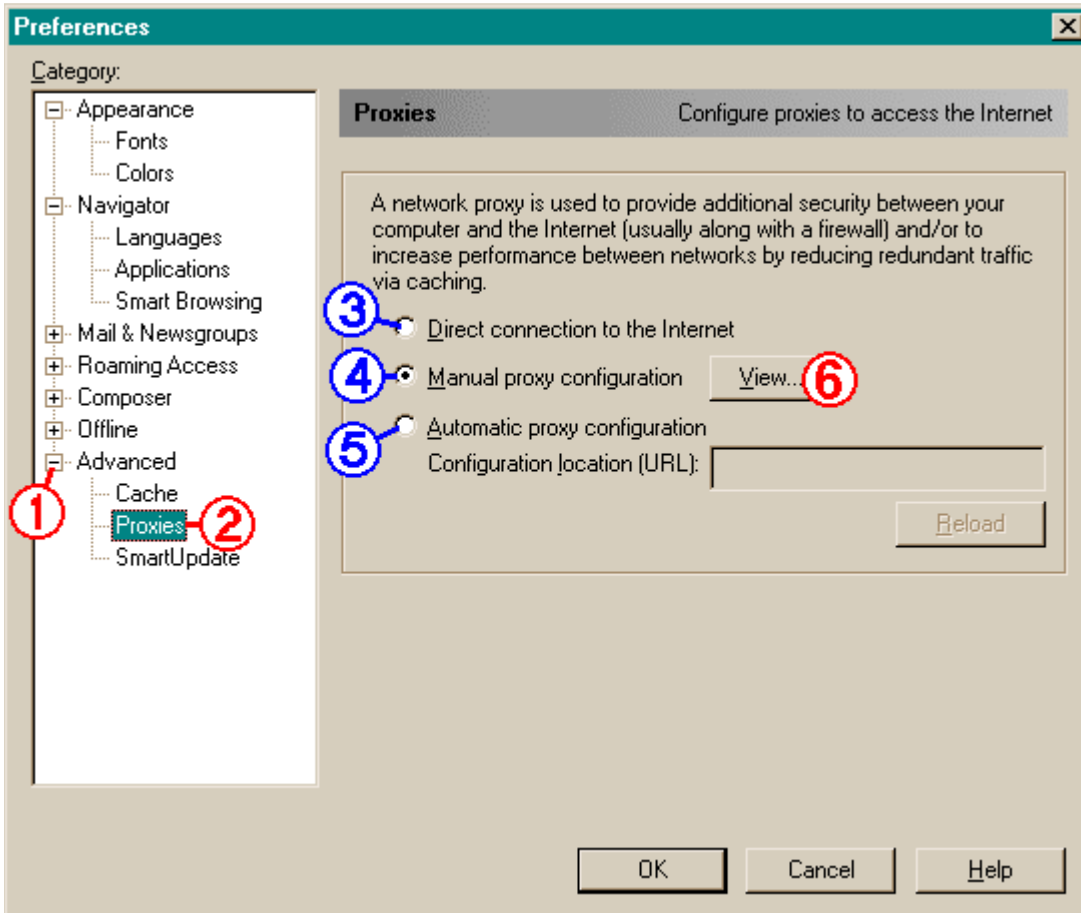


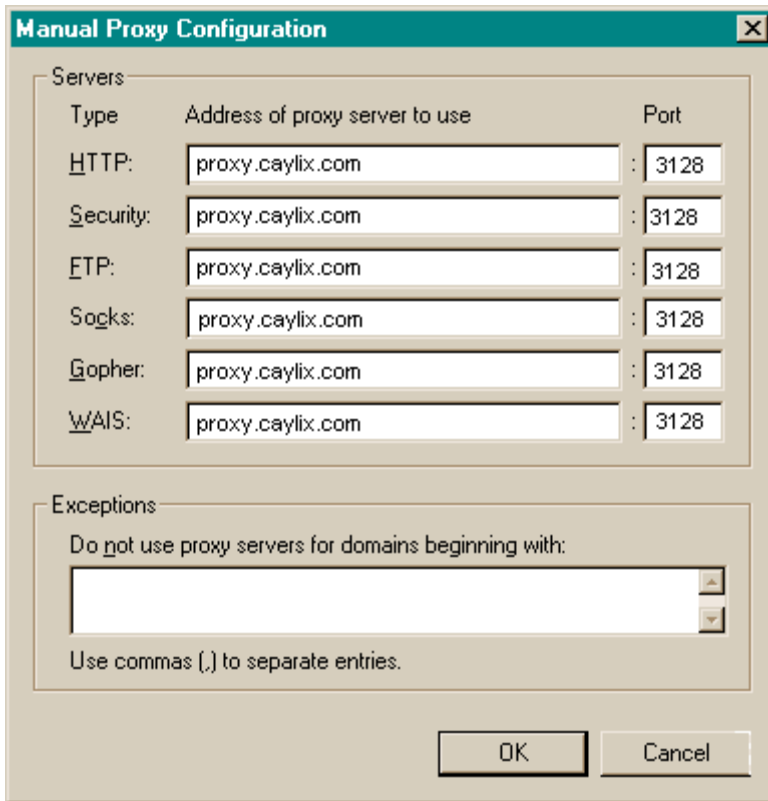
Netscape Proxy Configuration



Open the *Internet Options* dialog:
Click the *Edit* menu and select *Preferences*.



If necessary, expand the *Advanced* category. Click *Proxies*. Select *Manual proxy configuration*.
Click the *View* button.



The image shows a 'Manual Proxy Configuration' dialog box with a title bar containing a close button. It is divided into two main sections: 'Servers' and 'Exceptions'. The 'Servers' section contains a table with columns for 'Type', 'Address of proxy server to use', and 'Port'. There are six rows, each for a different protocol: HTTP, Security, FTP, Socks, Gopher, and WAIS. Each row has a long text box for the address and a short text box for the port. The 'Exceptions' section has a label 'Do not use proxy servers for domains beginning with:' followed by a large empty text box with a scroll bar. Below this is the instruction 'Use commas (,) to separate entries.' At the bottom of the dialog are 'OK' and 'Cancel' buttons.

Type	Address of proxy server to use	Port
HTTP:	proxy.caylix.com	3128
Security:	proxy.caylix.com	3128
FTP:	proxy.caylix.com	3128
Socks:	proxy.caylix.com	3128
Gopher:	proxy.caylix.com	3128
WAIS:	proxy.caylix.com	3128

Do not use proxy servers for domains beginning with:

Use commas (,) to separate entries.

OK Cancel

Type: *proxy.caylix.com* into all 6 of the long boxes under *Address of proxy server*.
Type *3128* into all 6 of the short boxes under *Port*. Click *OK*.