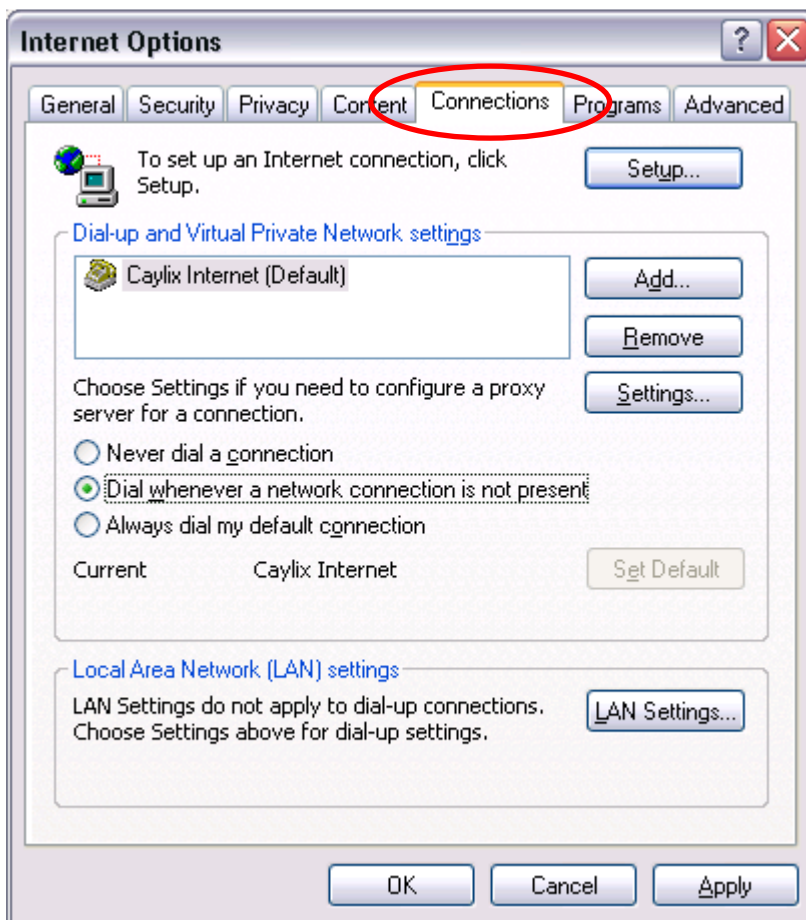


# Configuring Internet Browser

## Internet Explorer

### Setting up Proxy Server

1. Open *Internet Explorer*.
2. From the menu bar select **Tools** and then choose **Internet Options...** The following screen appears:
3. Click on the **Connections** tab as shown below.

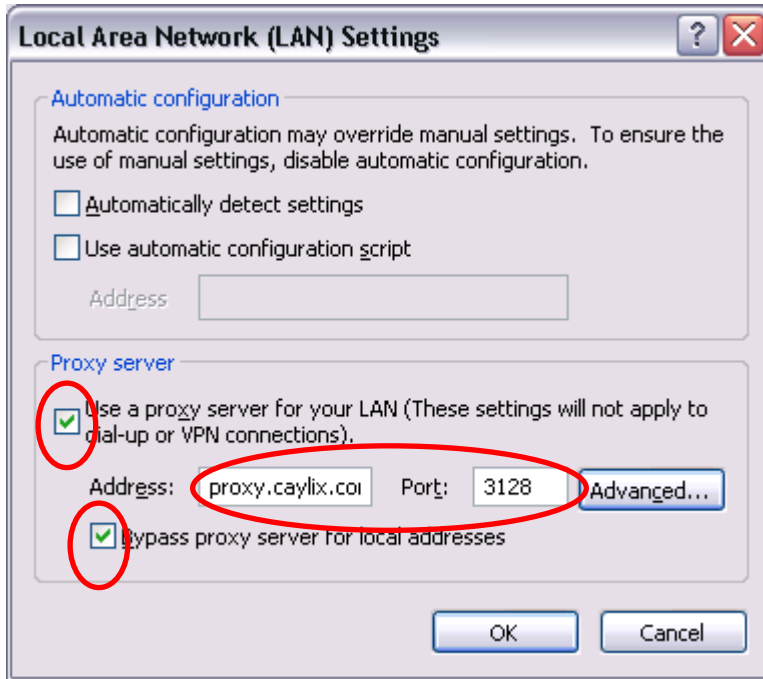


4. **\*\*NOTE\*\*** At this point the directions will vary depending on whether or not you have a high speed connection or dialup connection. If you have a high-speed connection, please continue with Step #5. If you have a dialup connection, please skip to Step #8

**\*\*NOTE\*\*** the screen may not be identical, but it should look very similar.

## ADSL Connection Proxy Server Setup

5. Click on the button labelled **LAN Setting...**. The following screen will appear:



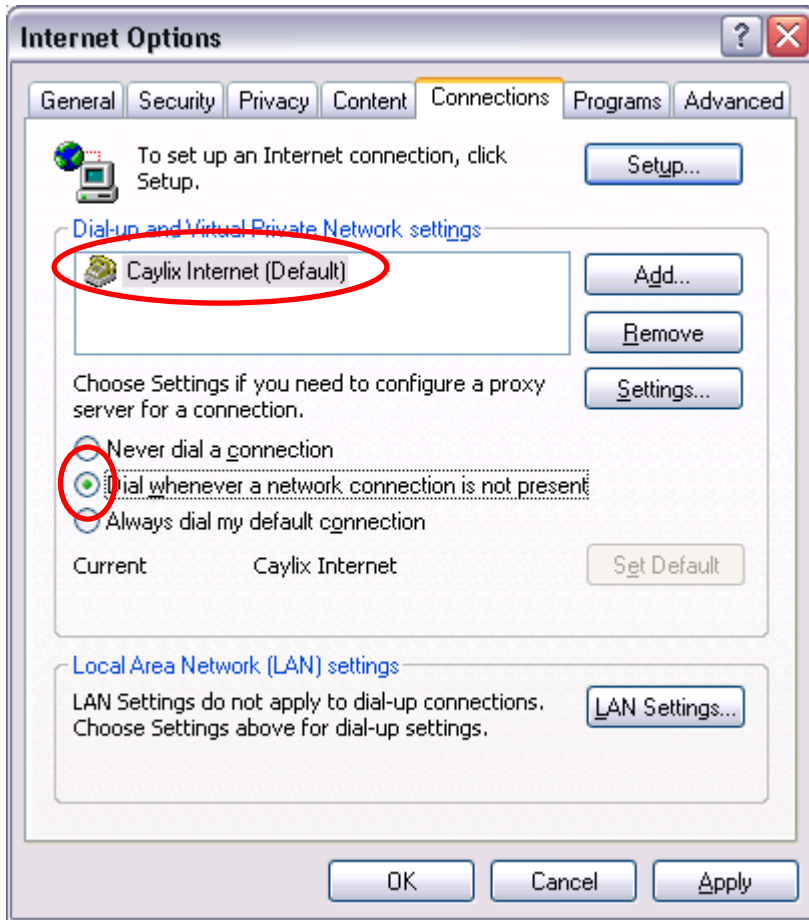
6. Fill out the screen exactly as shown above:

- Check **Use a proxy server for your LAN**.
- Check **Bypass proxy server for local addresses**.
- Type: *proxy.caylix.com* into the **Address** textbox.
- Type: *3128* into the **Port** textbox.
- Make sure that **Automatically detect settings** is unchecked.

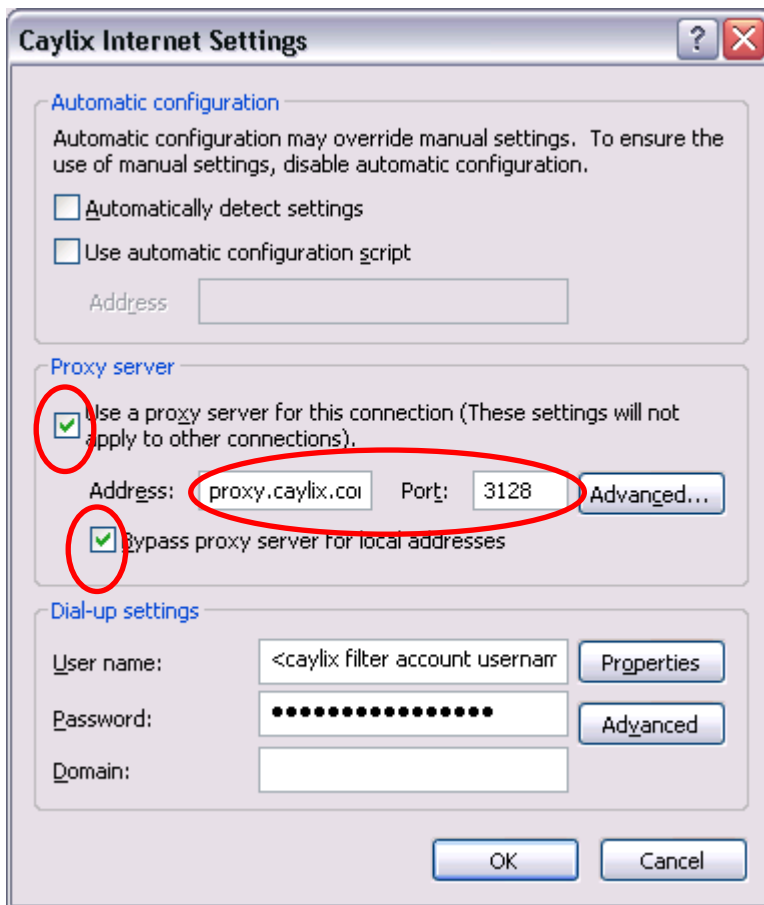
7. Click **OK**, and then **OK** to exit out of these settings. You are now ready to surf the Internet.

## Dialup Connection Proxy Server Setup

8. Consider the following screen again, which is the one you should still have on your screen:



9. Highlight or select the **Caylix Internet** connection, make sure that you have already setup your Caylix Dialup Connection. Also select **Dial whenever a network connection is not present** from the options given.
10. With the **Caylix Internet** connection chosen, click on **Settings...** The following screen will appear:



11. Fill out the screen exactly as shown above:
  - a. Check **Use a proxy server for your LAN**.
  - b. Check **Bypass proxy server for local addresses**.
  - c. Type: *proxy.caylix.com* into the **Address** textbox.
  - d. Type: *3128* into the **Port** textbox.
  - e. Make sure that **Automatically detect settings** is unchecked.
  - f. Leave the **Dial-up Settings** as is
12. Click **OK**, and then **OK** to exit out of these settings. You are now ready to surf the Internet.
13. If you need to setup your email program, please refer to the **Configure Email Manual**.