

Caylix Filter Box

USER

MANUAL



USER MANUAL

TABLE OF CONTENTS

	<u>Page #</u>
1.0 GENERAL INFORMATION	1-1
1.1 System Overview	1-1
2.0 SYSTEM SUMMARY.....	2-1
2.1 System Configuration	2-1
2.2 Web Administration.....	2-2
2.1 System Configuration	2-8
3.0 Trouble Shooting	3-1
3.1 Common Issues.....	3-1
3.2 Getting Help.....	3-1

1.0 GENERAL INFORMATION

1.0 GENERAL INFORMATION

1.1 System Overview

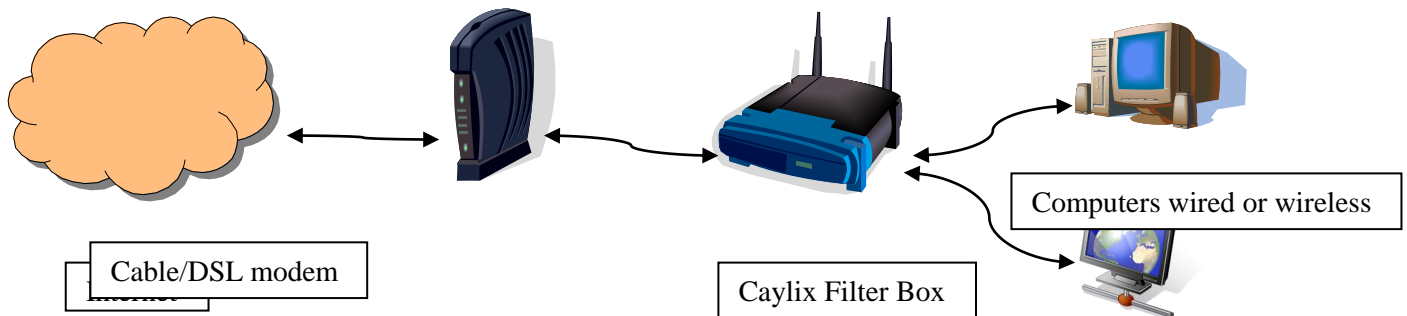
Thank you for choosing the Caylix Filter Box. The Caylix Filter Box is based off of the Linksys Wireless-G Broadband Router. This device allows you access the Internet via a wired or wireless connection, using the internet service provider (ISP) of your choice, and delivers a web filter that is based on Biblical principles.

2.0 SYSTEM SUMMARY

2.0 SYSTEM SUMMARY

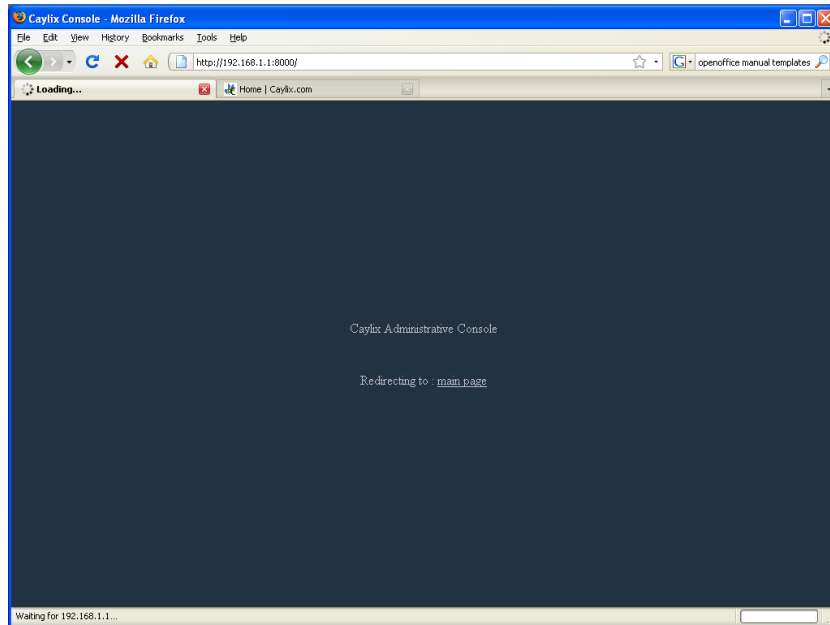
2.1 System Configuration

Set up the device by connecting your internet connection (DSL, cable, satellite, broadband wireless, etc) into the Caylix Filter Box internet port. Next, use a CAT5 cable to connect your computer(s) to one of the 1,2,3,4 ports on the back panel of the Caylix Filter box. If you have a wireless network, you can connect to the Caylix Filter Box wirelessly. The network name (ESSID) is “caylix” and default password is “caylix01”.

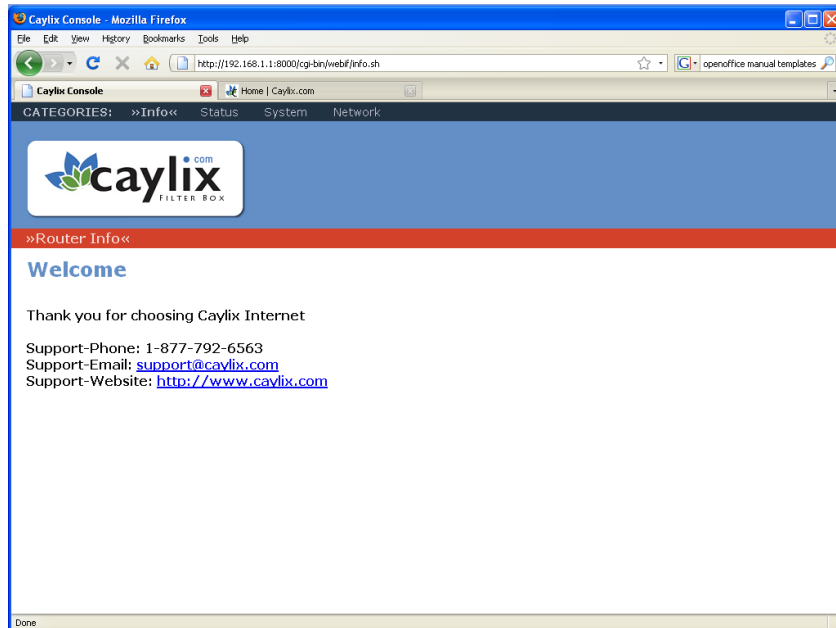


2.2 Web Administration

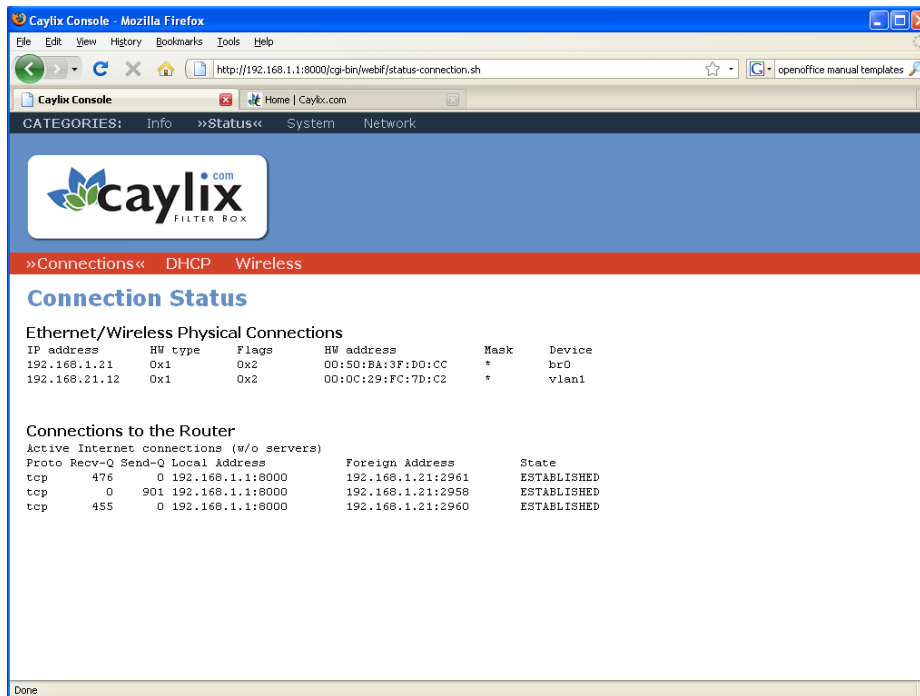
By default, the web administration website is <http://filterbox.caylix.com>. The username is “admin” with a default password of “caylix01”



After you have successfully logged in to your system, you will see the welcome page.



Access the **STATUS** pages by clicking the link in the top bar. These pages give you information on your connections, DHCP, Wireless, and WAN (ISP).



The screenshot shows the Caylix Console web interface in a Mozilla Firefox browser. The address bar shows the URL `http://192.168.1.1:8000/cgi-bin/webif/status-connection.sh`. The page title is "Caylix Console" and the breadcrumb navigation is "CATEGORIES: Info >>Status<< System Network".

The main content area is titled "Connection Status" and is divided into two sections:

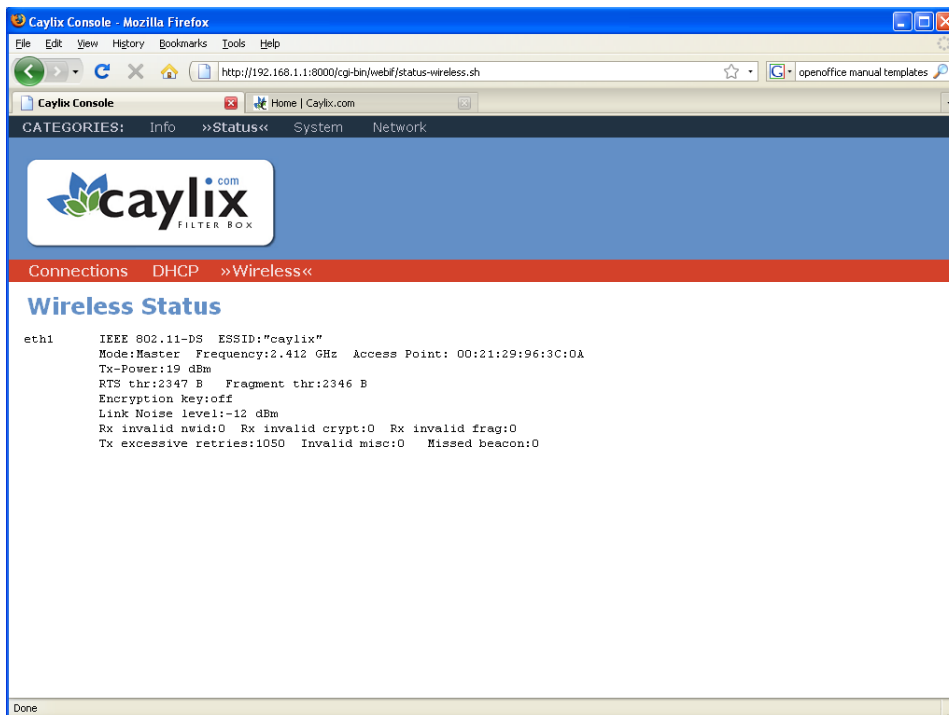
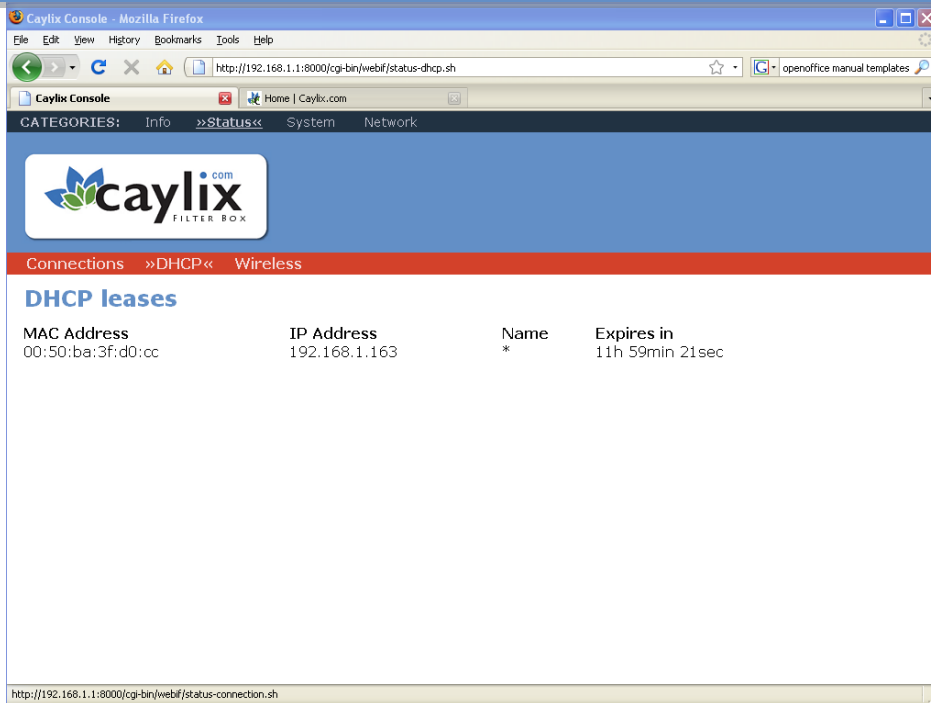
Ethernet/Wireless Physical Connections

IP address	HW type	Flags	HW address	Mask	Device
192.168.1.21	0x1	0x2	00:50:BA:3F:D0:CC	*	br0
192.168.21.12	0x1	0x2	00:0C:29:FC:7D:C2	*	vlan1

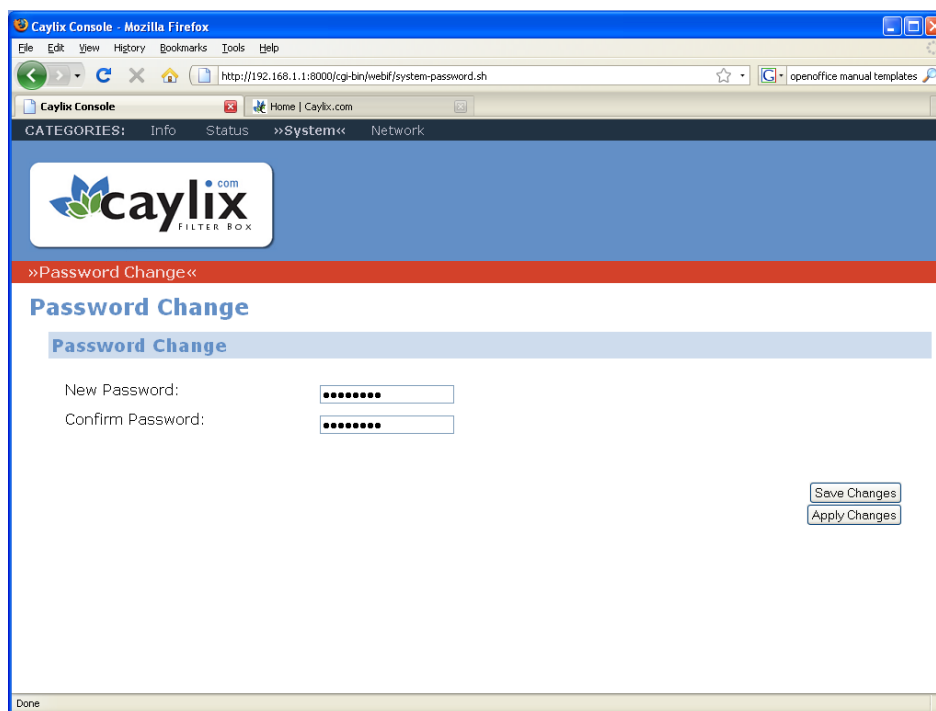
Connections to the Router

Active Internet connections (w/o servers)

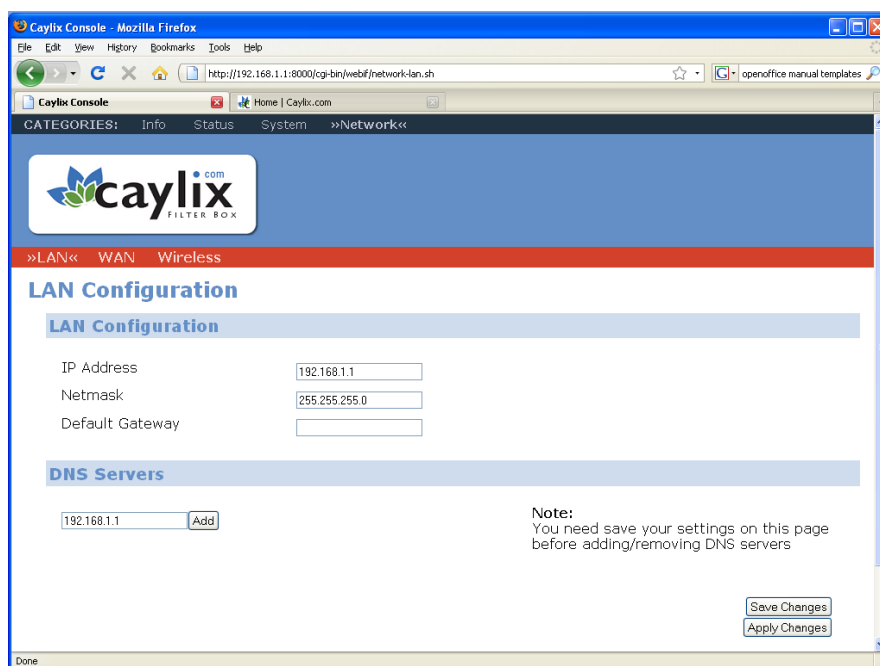
Proto	Recv-Q	Send-Q	Local Address	Foreign Address	State
tcp	476	0	192.168.1.1:8000	192.168.1.21:2961	ESTABLISHED
tcp	0	901	192.168.1.1:8000	192.168.1.21:2958	ESTABLISHED
tcp	455	0	192.168.1.1:8000	192.168.1.21:2960	ESTABLISHED



Access the **SYSTEM** pages by clicking the link in the top bar. This is where you can change your web administration password. If you make changes, click “save changes”, then reboot router for changes to take effect.



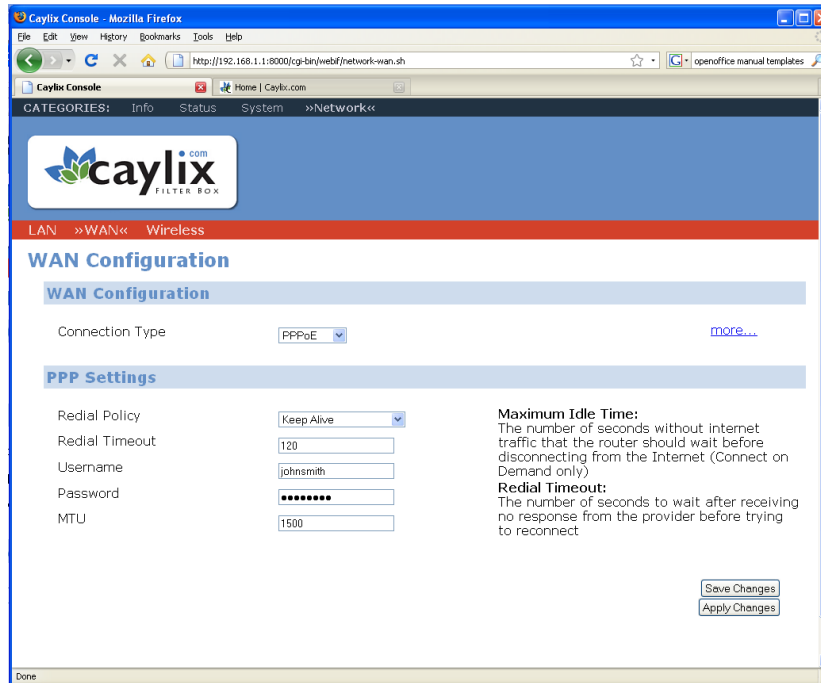
To change your LAN IP address, go to **Network** and then **LAN**. If you make changes, click “save changes”, then click “apply changes” for the settings to take effect. (Note: your LAN DHCP range will change after you reboot, if you make changes).



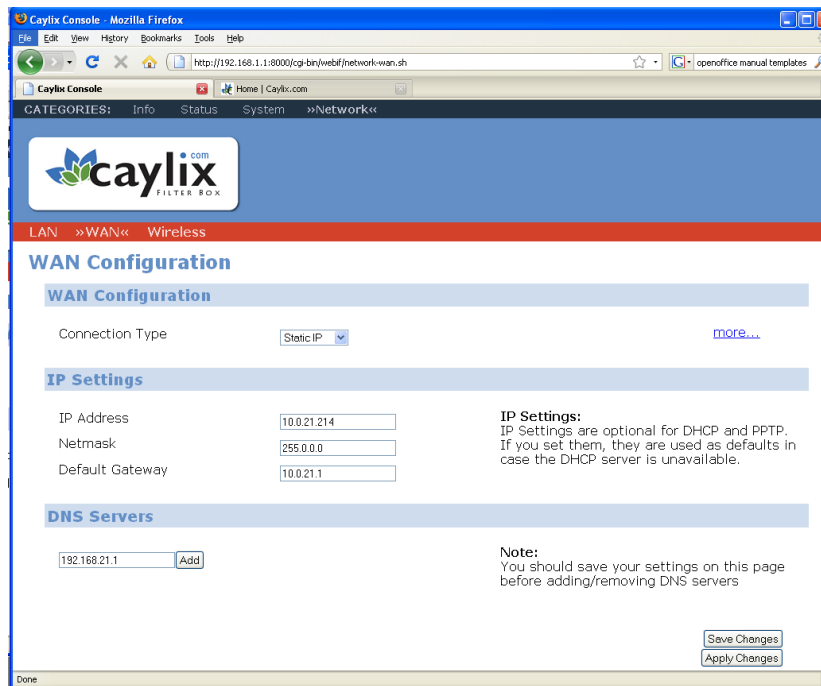
Go to **Network>WAN** to change your WAN type. The default is DHCP, but you can also choose from PPPoE or Static. If you make changes, click “save changes”, then click “apply changes” for the settings to take effect.



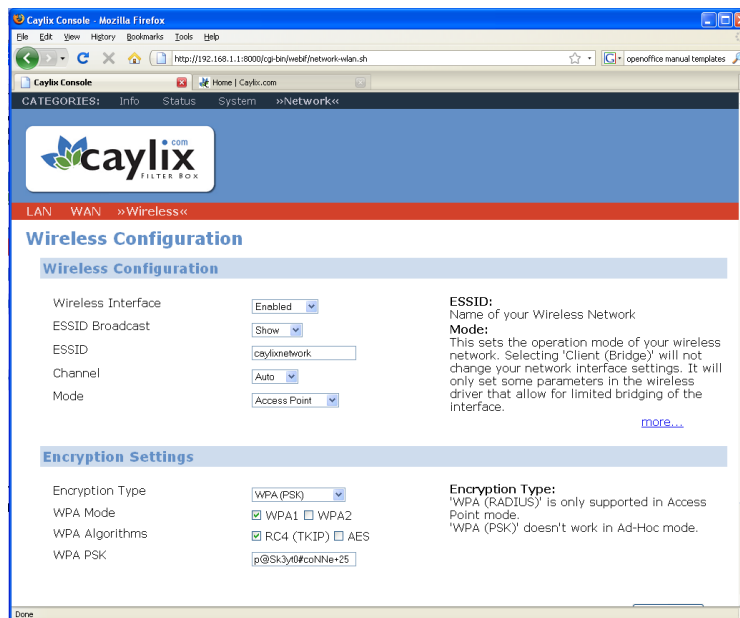
Under **Network>WAN**, if you are using PPPOE, change the connection type to PPPoE and input your username and password and other settings and click “save changes”, then click “apply changes”.



Under **Network>WAN**, if you are using a Static IP Address, change the connection type to Static IP and input your IP Address, Netmask and Default Gateway. Click “save changes”, then click “apply changes”.

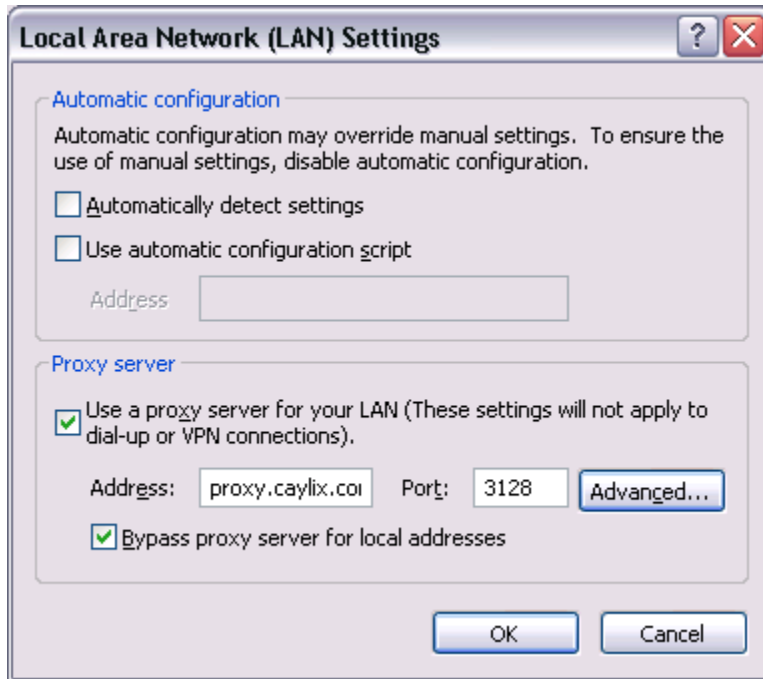


Under **Network>Wireless**, you can change your wireless ESSID name and settings. You could also change the WPA PSK password to something other than caylix01 for added security.



2.1 System Configuration

To setup your computer(s) to be able to browse the Internet, in Internet Explorer go to Tools>Internet Options>Connections>LAN settings:



Fill out the screen exactly as shown above:

- Check **Use a proxy server for your LAN**.
- Check **Bypass proxy server for local addresses**.
- Type: *proxy.caylix.com* into the **Address** textbox.
- Type: *3128* into the **Port** textbox.
- Make sure that **Automatically detect settings** is unchecked.

For configuration of other web browsers such as Firefox, please go to the support section of our website at <http://www.caylix.com/support>.

3.0 TROUBLE SHOOTING

3.0 TROUBLE SHOOTING

3.1 Common Issues

Your computer cannot connect to the internet.

- Make sure the CFB is powered on, your computer is plugged into one of the (1,2,3,4) LAN ports, your ISP's DSL/Cable/Wireless modem is plugged into the CFB Internet port, and the Power LED on the CFB is not blinking.
 - If it is blinking, restart the Caylix Filter Box by unplugging and plugging it back in.
- Make sure your computer is receiving a DHCP address. To check, click Start>Run> type **CMD**. In the new window that opens type: **ipconfig**. If your computer has a 192.168.1.* address, try pinging 192.168.1.1 by typing in (CMD): **ping 192.168.1.1**. If that works try **ping caylix.com** and if that works you need to set up your proxy settings (see page 2-7).
- If you see another number in the IP Address field make sure you network card is set up for DHCP. Go to Start>Control Panel>Network Connections> Local Area Connection (right click) Properties>Internet Protocol (TCP/IP) Properties. Make sure it's set to Obtain an IP address automatically and Obtain DNS server address automatically. Then repeat the above step.

Your computer cannot connect to the wireless network

- Make sure the wireless network SSID or name is the same on the router as the computer. Also make sure you are typing in the correct password for your wireless network (default: caylix01).

3.2 Getting Help

Phone: 1-877-792-6563 (Toll Free)
Email: support@caylix.com
Website: <http://www.caylix.com>